



Brandner Design

Steel Panels Systems & Patina Finishes

Patina Finishes

A patina is the result from a reactive process of applying acids to steel and common alloys to create completely original designs, colors, and textural finishes. For the last 15 years, Brandner Design has been leading the architectural trend of using these unique artistic metal finishes in both commercial and residential spaces across the world.



A Craft

Every metal surface and acid finish has its own method, and with our 15 years of experience creating patina finishes, we have mastered an extensive palette of colors.

Through an artistic use of acids, heat, humidity, time, and experienced craftsmanship, the finished product features timeless colors, textures, and designs that can be applied on sold and hot rolled steel, stainless steel, copper, brass, aluminum, bronze, and zinc. All our patinated products are sealed with a hand rubbed oil and wax, acrylic, or a clear power coat.

The Artisans

We are committed to creating timeless and signature architectural works of art in metal, wood, glass, concrete, leather, and acrylics.

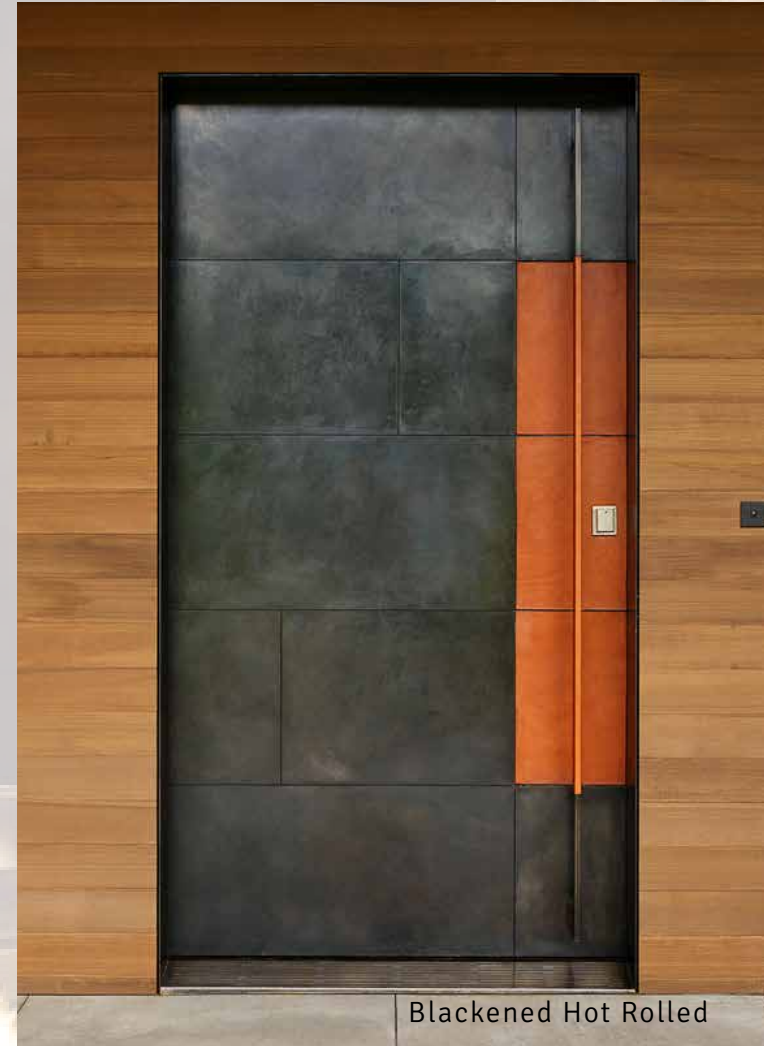
Everything we designed and built in our 41,500 square foot studio in Bozeman, Mt – a state-of-the-art facility featuring a complete millwork and cabinet shop, metal fabrication, Trumpf fiber laser and CNC brake, finishing department, and design studio. Staffed with 35 woodworkers, metal workers, artisans, architectural designers, and engineers, we thrive by solving complex problems and continually reinventing what is possible in the design world.



Patina Gallery



Rust Veil



Blackened Hot Rolled



Natural Etched Steel



Teton Copper

Patina Gallery



Blackened Hot Rolled Steel with face screws



Antique Brown Black floating panels



Rust Veil with face screws



Natural Etched Steel



Natural Etched Steel

Patina Gallery



Directional Black Veil Floating Fireplace



Blackened Hot Rolled



Hand-Brushed Copper



Stainless Steel



Blackened Hot Rolled



Blackened Hot Rolled



Blackened Hot Rolled

Steel and Alloys

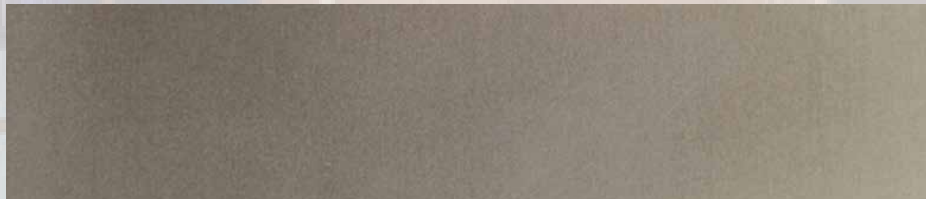
Hot Rolled Carbon Steel:

It has an inherent blue mill scale giving it an “industrial” look. We add an acid patina to enhance this blue mill. Bear in mind carbon steel might be subject to rust in wet areas and exterior applications.



Cold Rolled Carbon Steel:

This steel does not have blue mill scale so it allows us to use a variety of acid patinas to create an array of colors and patterns. Bear in mind carbon steel might be subject to rust in wet areas and exterior applications.



Brass:

Brass is a soft metal alloy of copper and zinc that will not rust. This warm yellow metal can be patinated in shades of light and dark brown. Rust resistant, perfect for wet areas and exterior application.



Stainless Steel:

Stainless Steel has a low carbon content and is extremely rust resistant, making it perfect for wet areas and exterior application.



Zinc Sheeting:

Zinc Sheeting is rust and corrosion resistant and is a light grey in color. Zinc can be patinated in different shades of light to dark charcoal. Rust resistant, perfect for wet areas and exterior application.



Bronze:

Bronze is an alloy consisting primarily of copper and tin, along with other metals. It can be patinated in various shades of brown and yellow. Rust resistant, perfect for wet areas and exterior application.



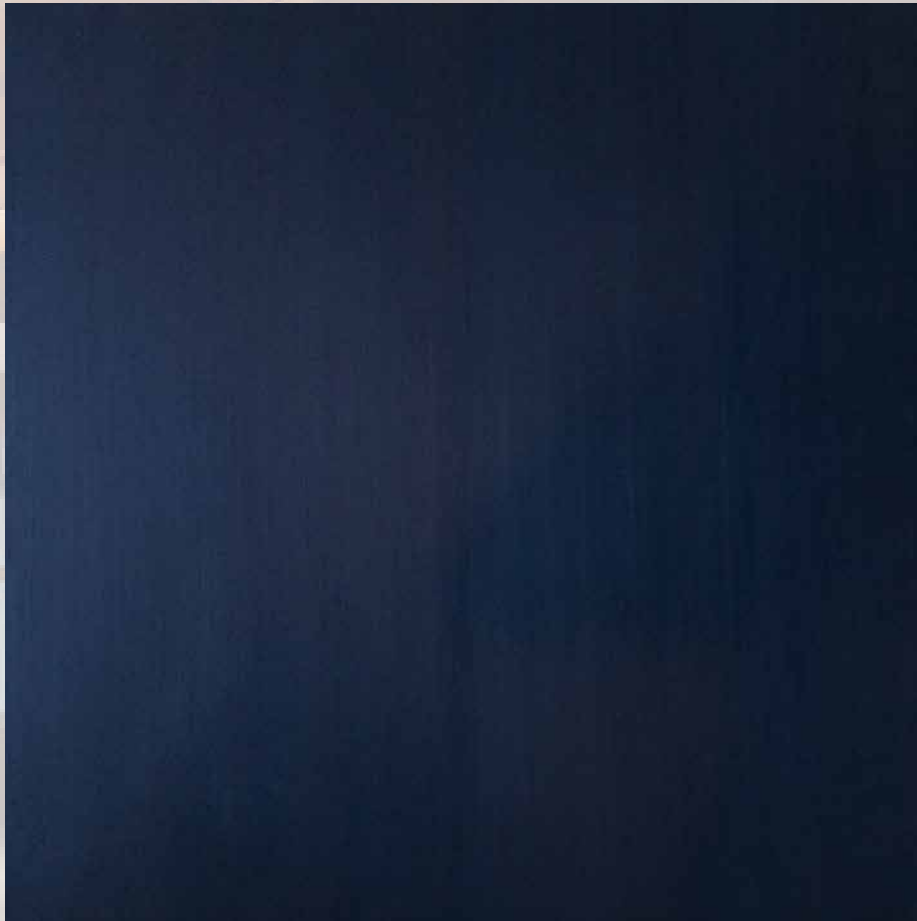
Copper:

A soft material that can be patinated in various shades of brown. Rust resistant, perfect for wet areas and exterior application.



Patina Options:

Directional Black Veil



Only Available on Carbon Steel

Random Black Veil



Only Available on Carbon Steel

Patina Options:

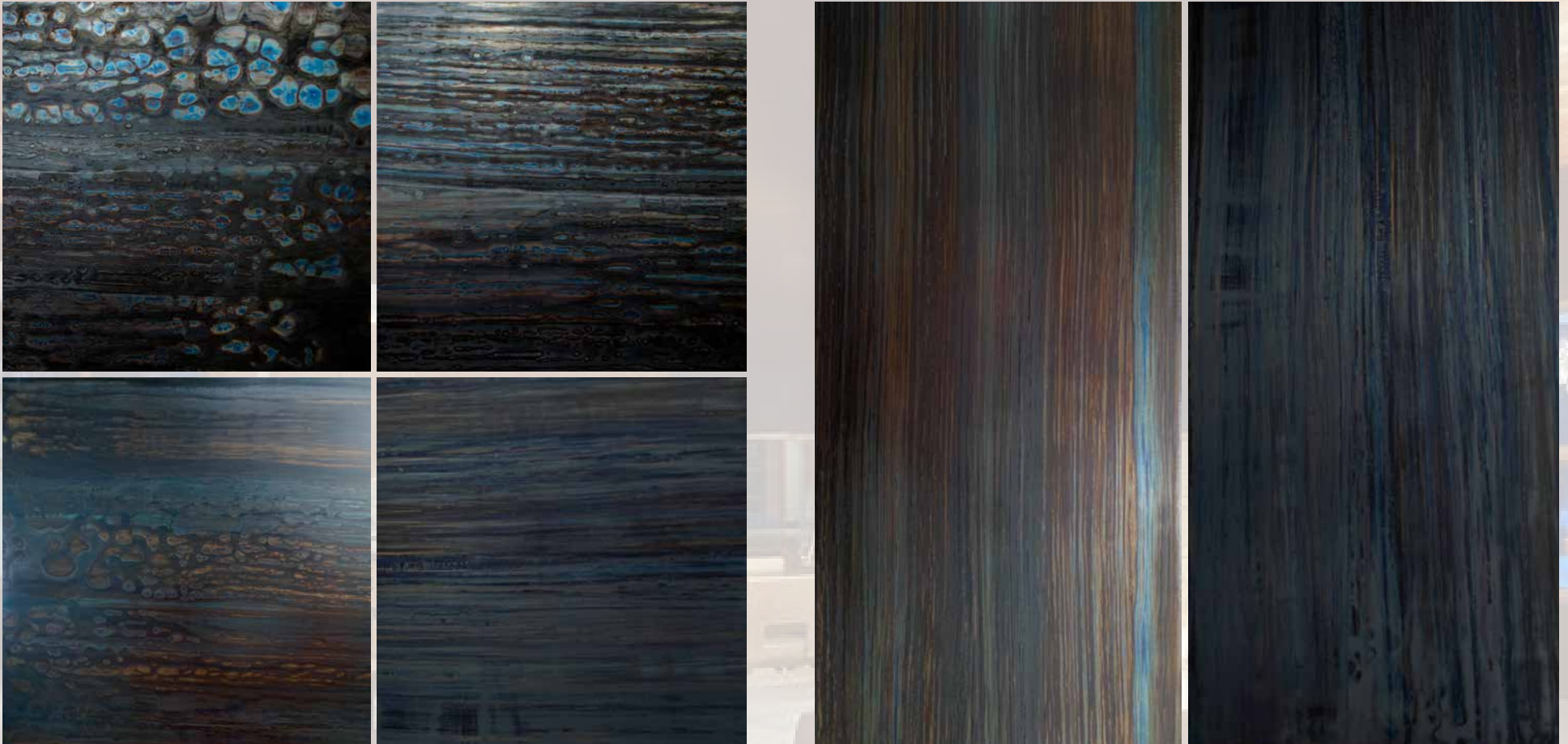
Blackened Hot Rolled



Only Available on Carbon Steel

Patina Options:

Directional Blue Heat



Only Available on Carbon Steel

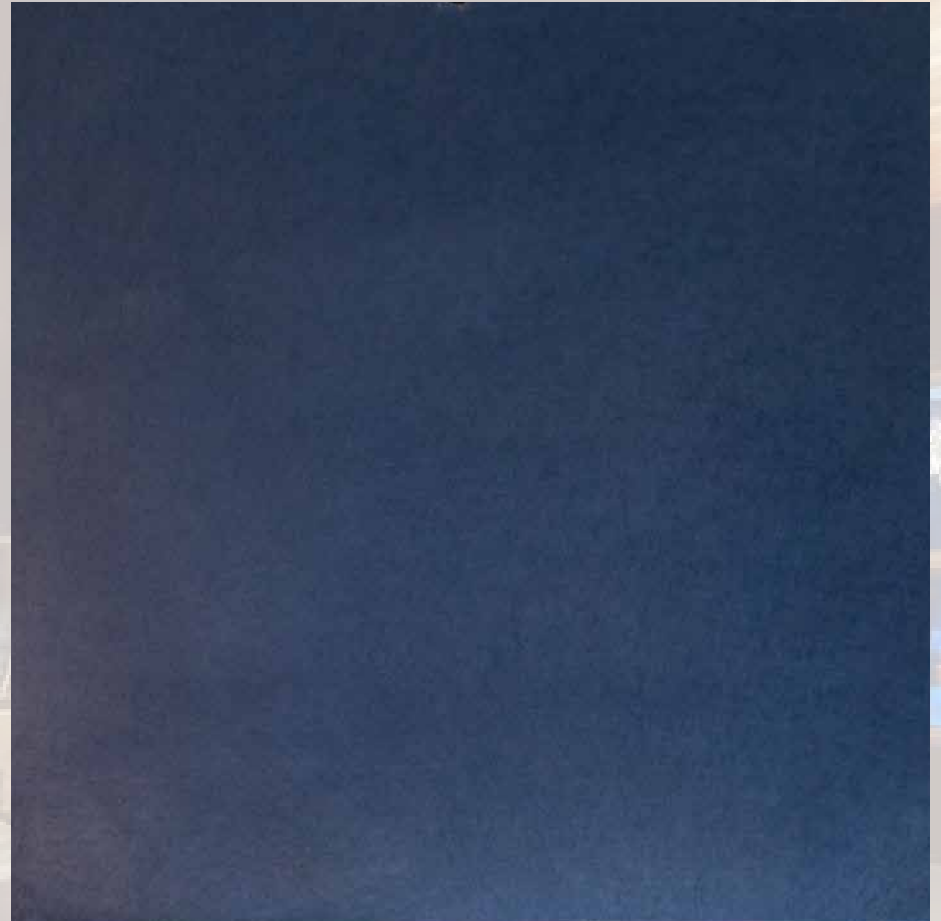
Patina Options:

Weathered Black Dark



Only Available on Stainless Steel

Charcoal Steel



Available on Carbon Steel & Stainless Steel

Patina Options:

Weathered Black and Bronze



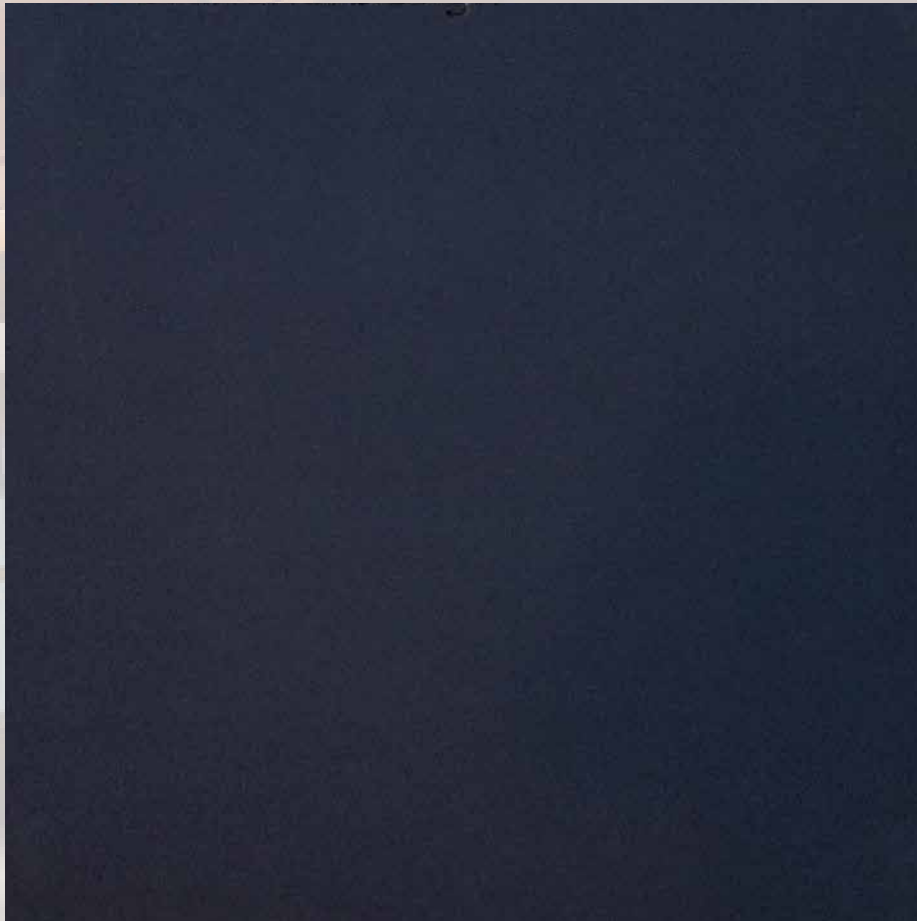
Only Available on Stainless Steel



Available on Carbon Steel & Stainless Steel

Patina Options:

Sandblasted Black



Only Available on Stainless Steel

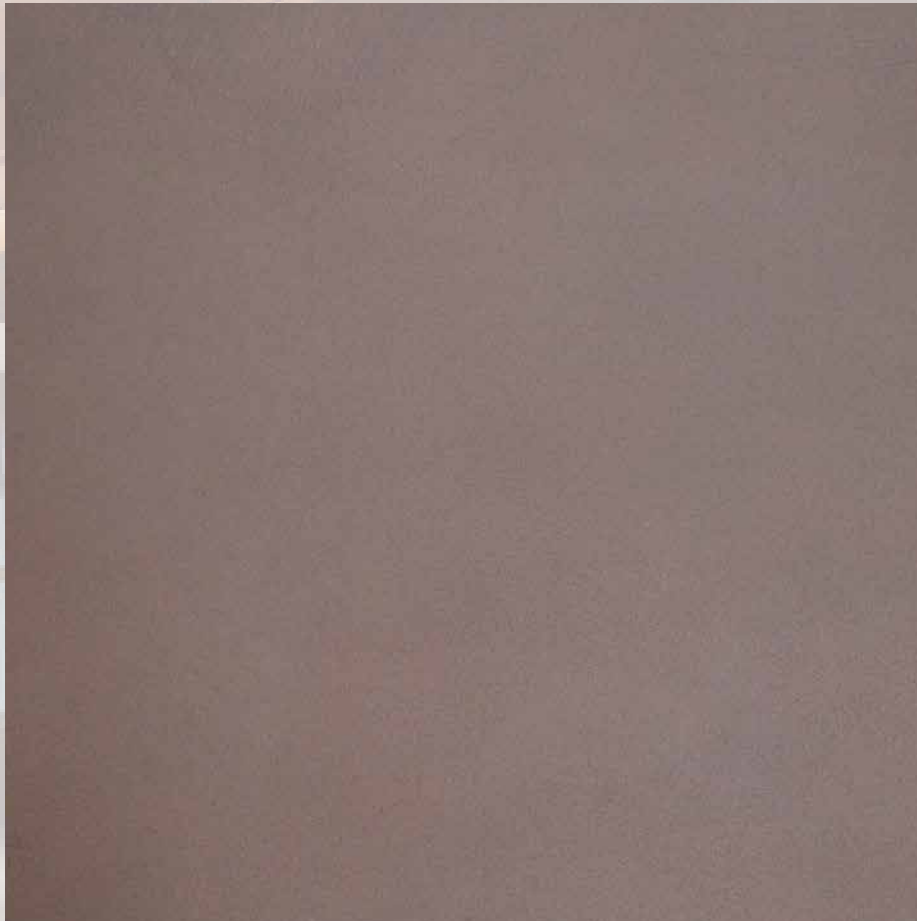
Sandblasted Natural



Only Available on Stainless Steel

Patina Options:

Sandblasted Light Bronze



Only Available on Stainless Steel

Sandblasted Dark Bronze



Only Available on Stainless Steel

Patina Options:

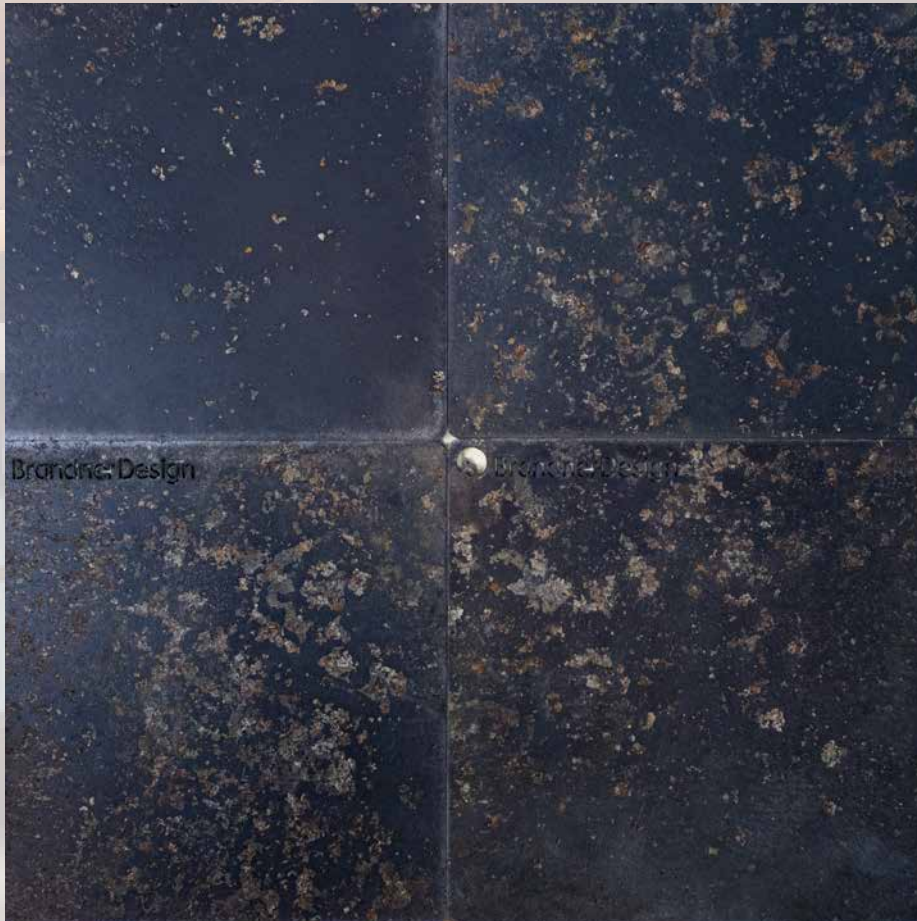
Bronze Stainless



Only Available on Stainless Steel

Patina Options:

Black Etched Steel



Available on Carbon Steel & Stainless Steel



Available on Carbon Steel & Stainless Steel

Patina Options:

Natural Etched Steel



Available on Carbon Steel & Stainless Steel



Available on Carbon Steel & Stainless Steel

Patina Options:

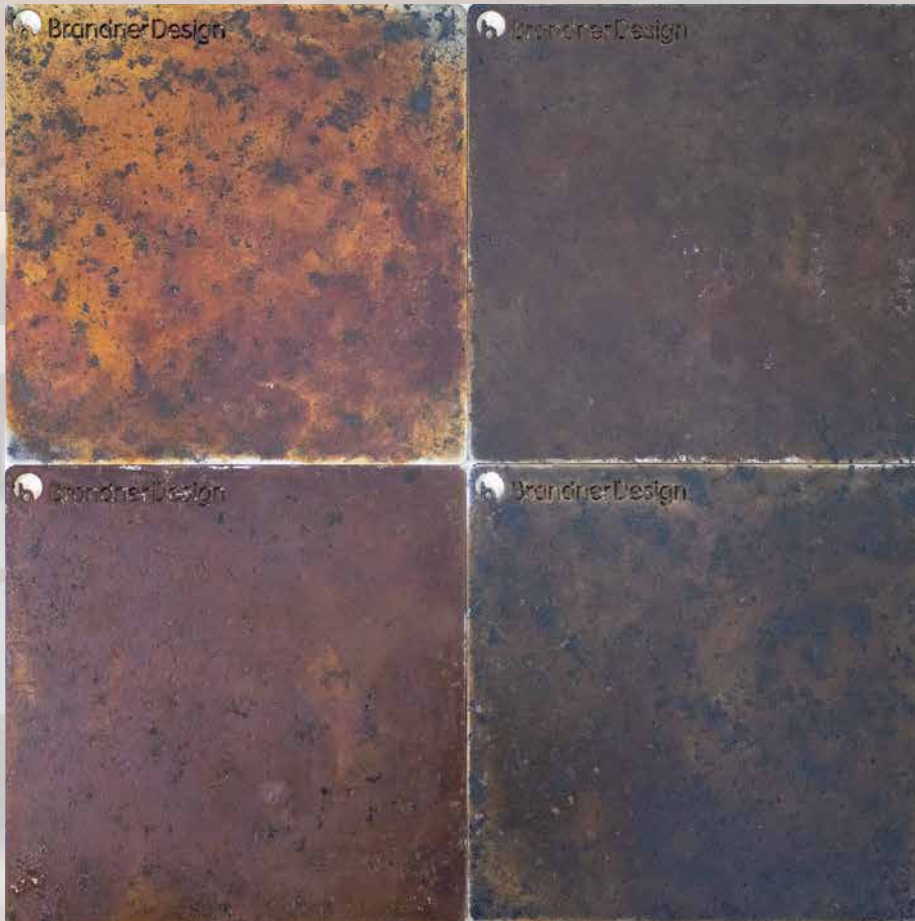
Marbleized Steel



Available on Carbon Steel & Stainless Steel

Patina Options:

Bronze Etched Steel



Available on Carbon Steel & Stainless Steel

Patina Options:

Autumn Veil



Only Available on Carbon Steel

Patina Options:

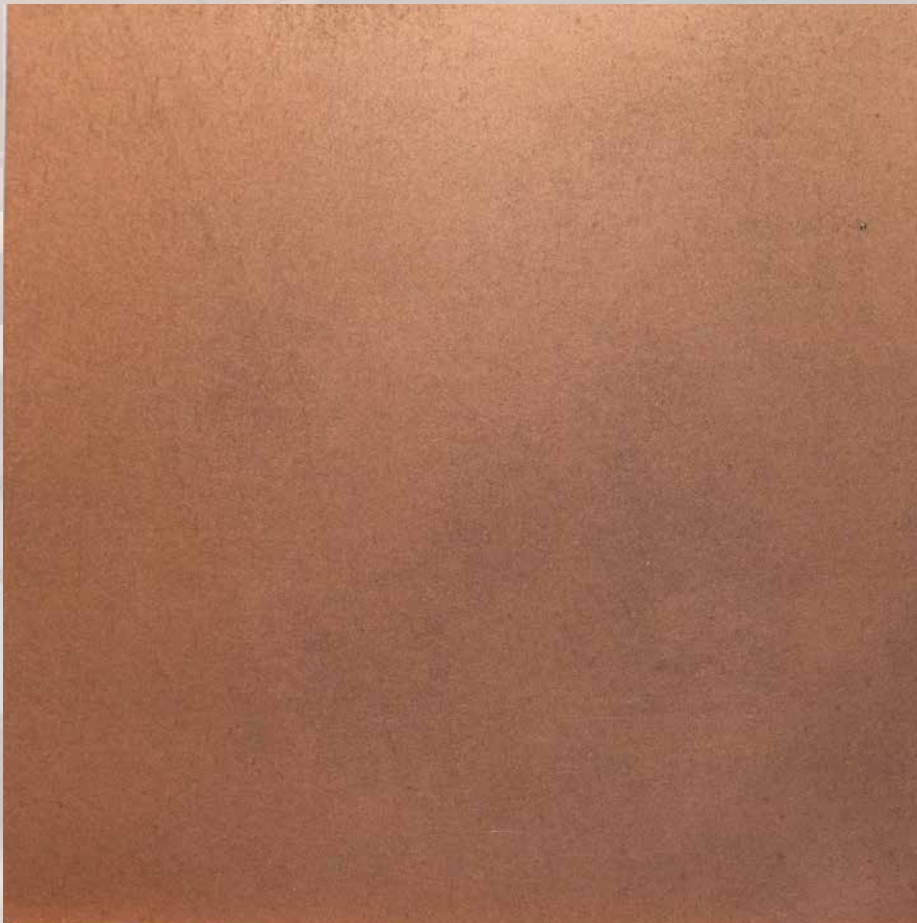
Rust Veil



Only Available on Carbon Steel

Patina Options:

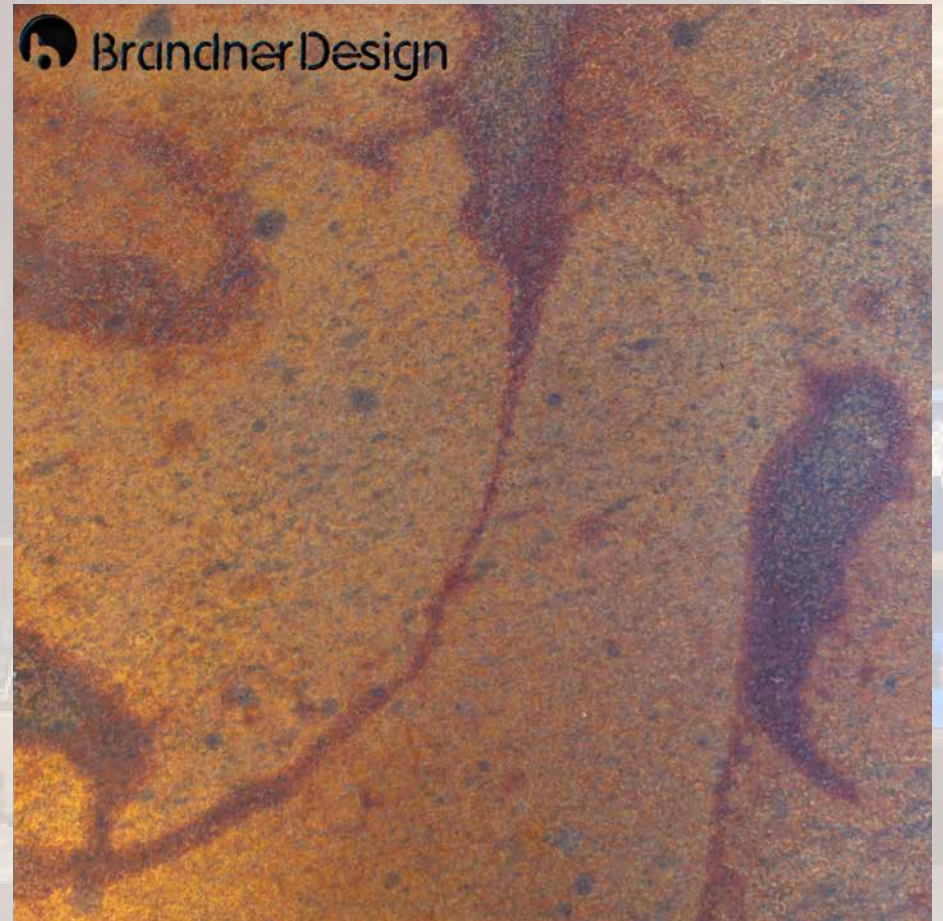
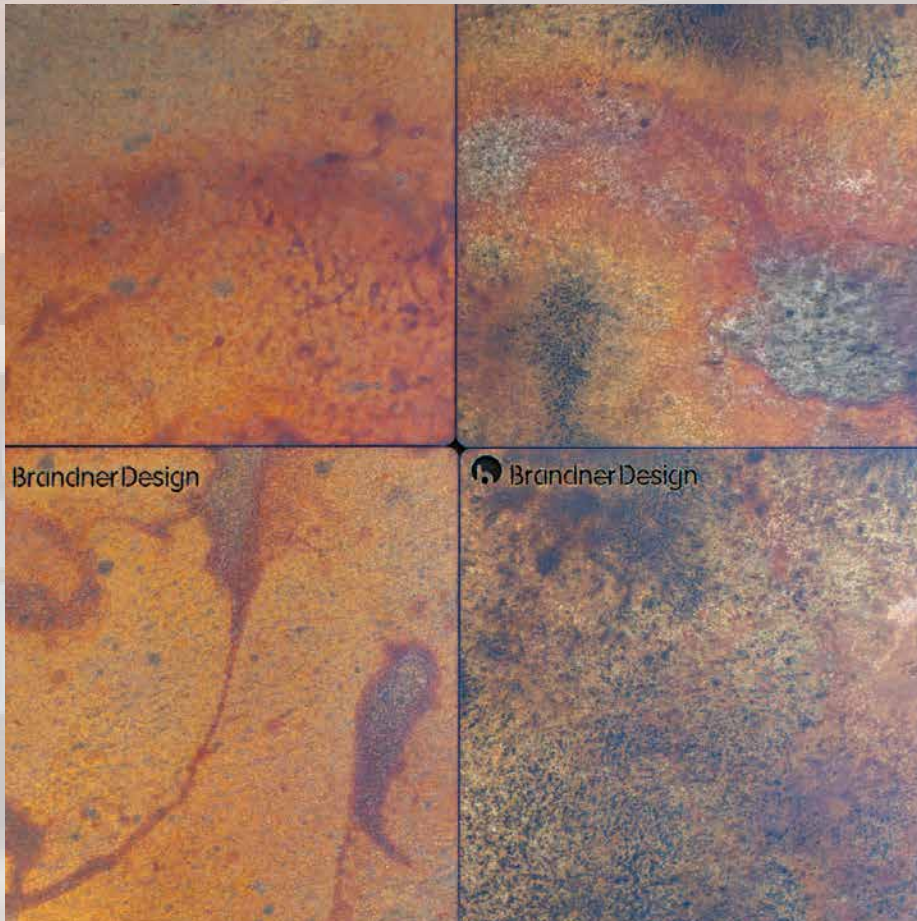
Copper Veil



Only Available on Carbon Steel

Patina Options:

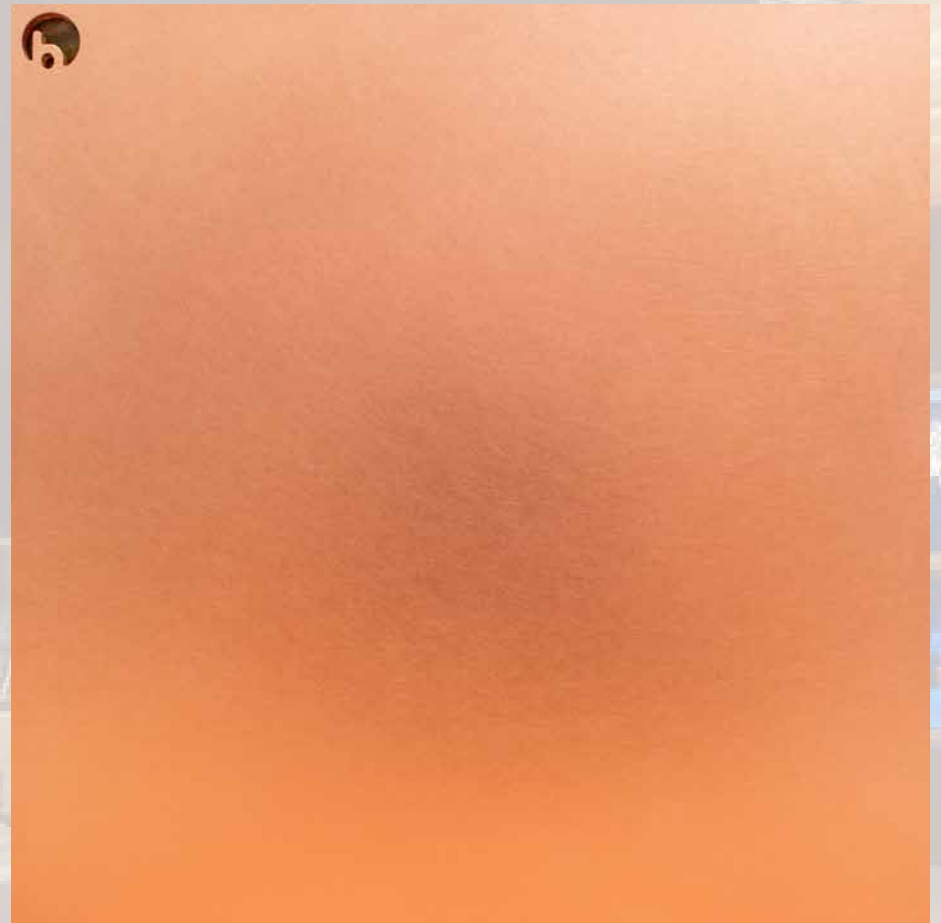
Antique Brown Black



Only Available on Carbon Steel

Patina Options:

DA Sanded Copper



Only Available on Copper

Patina Options:

Teton Copper



Only Available on Copper

Random Burnished Medium Zinc



Only Available on Zinc

Patina Options:

Linear Burnished Medium Zinc



Only Available on Zinc

Linear Burnished Light Zinc



Only Available on Zinc

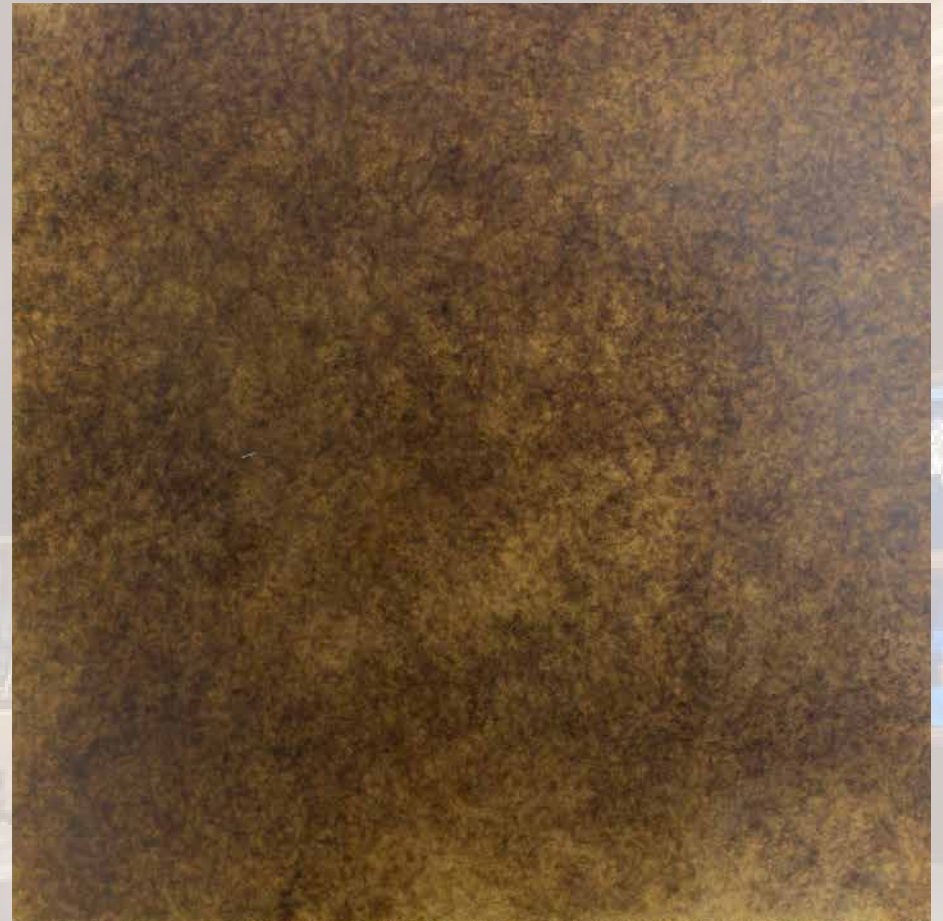
Patina Options:

Dark Brown on Brass



Only Available on Brass

Stippled Brass



Only Available on Brass

Patina Options:

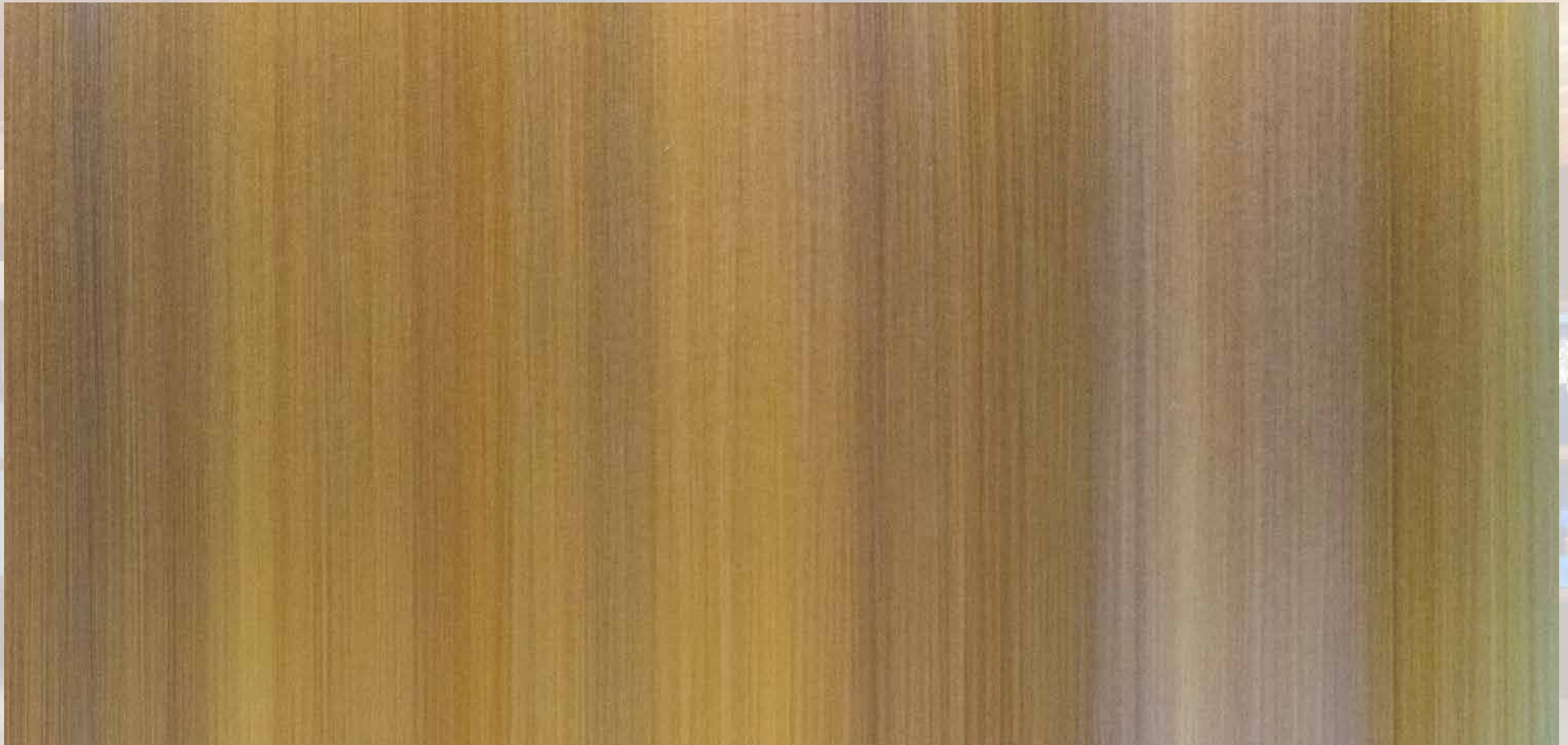
Teton Brass



Only Available on Brass

Patina Options:

Light Brown on Brass



Only Available on Brass

Patina Options:

DA Sanded Brass



Only Available on Brass

Patina Options:

Light Brown on Bronze



Only Available on Bronze

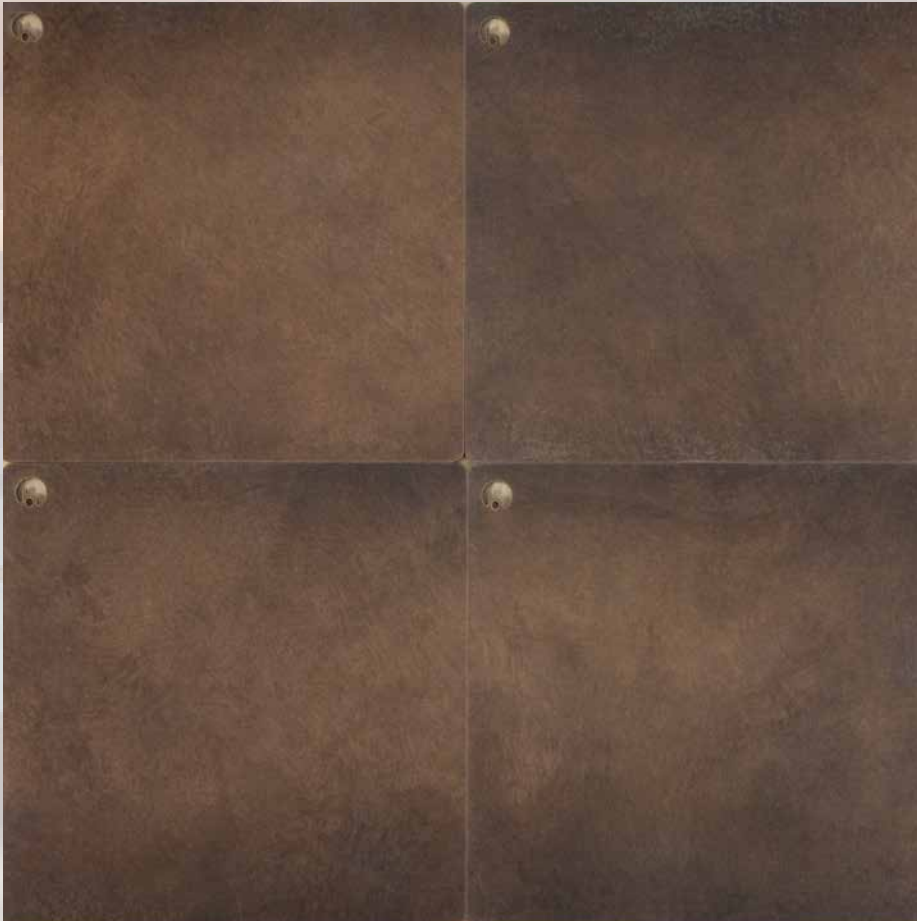
Dark Brown on Bronze



Only Available on Bronze

Patina Options:

Teton Light Bronze



Only Available on Bronze

Patina Options:

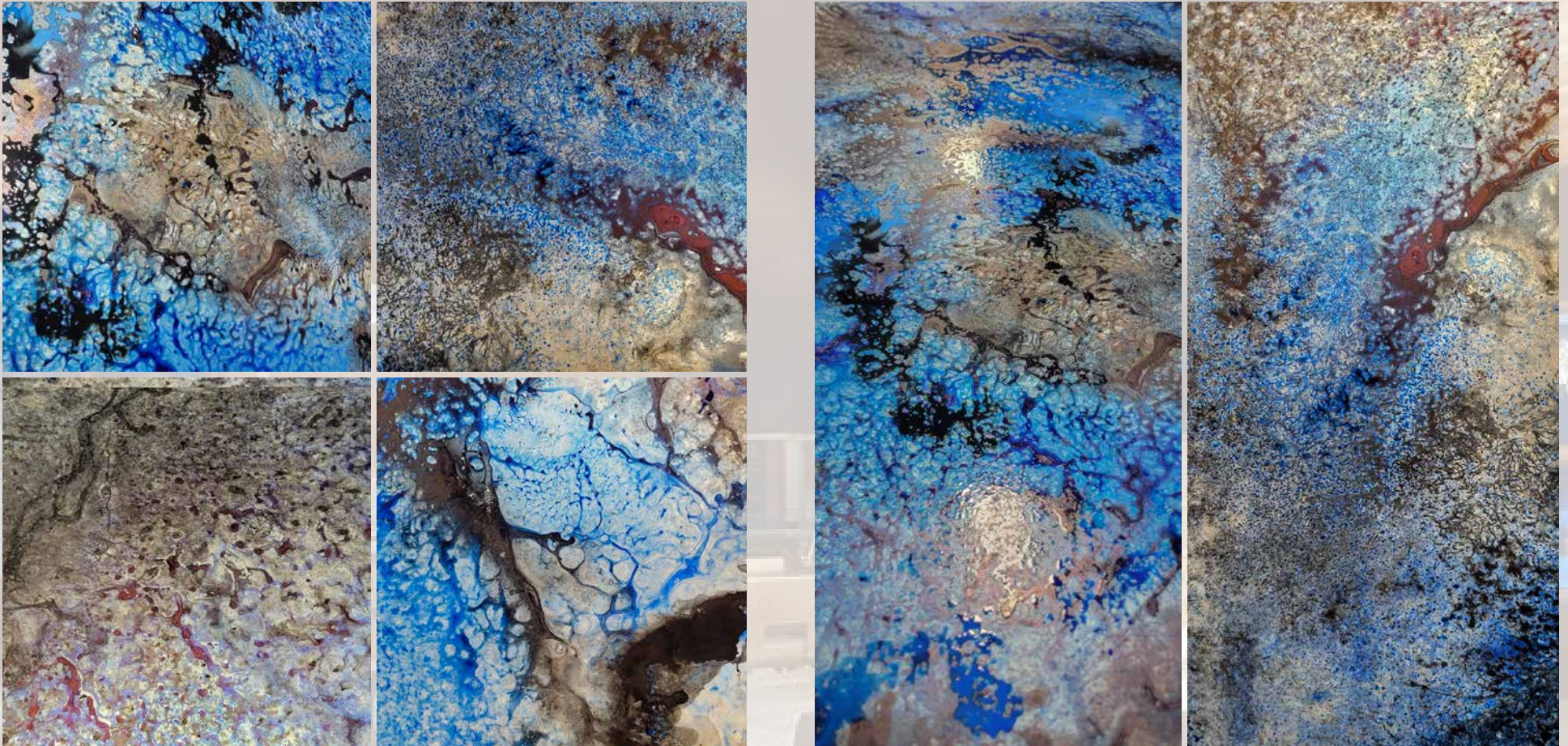
Teton Dark Bronze



Only Available on Bronze

Patina Options:

Vibrant Blue Pittsburgh Veil



Only Available on Aluminum

Patina Options:

Autumn Rain Veil



Only Available on Aluminum

Fastening Methods

Our Panels can be fastened using three different methods:

- **Exposed Fasteners:** panhead or countersunk flathead screws.
- **Hidden Fasteners:** Z-Clips
- **Adhesive Fasteners:** Glue



Panhead Screws



Countersunk Screws

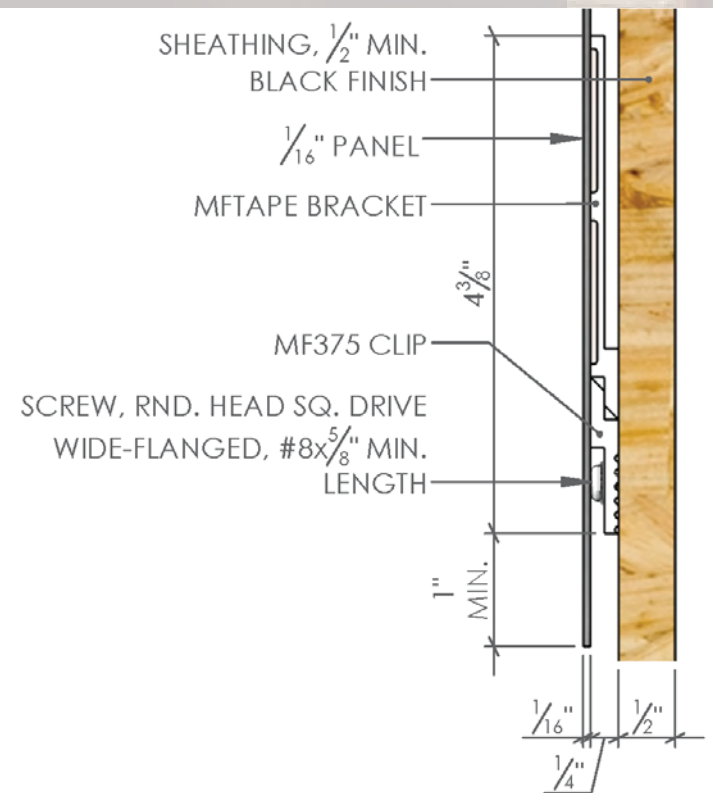


Exposed Fasteners

- **Panhead Screws** have a round head that lies on top on the steel surface. 14 gauge material recommended for panhead fasteners. Panels come with last cut holes.
- **Countersunk Screws** have a flat head that sits flush with the surface. Panels using countersunk screws are sold with predrilled holes. 12 gauge material recommended for countersunk fasteners and are intended for interior use only.

Hidden Fasteners

The Z-Clip fasteners are screwed to the steel panel substrate then fit into the opposing clip on the corresponding mounting surface. 16 gauge steel is recommended when using hidden Z-clips fasteners.



Adhesive Fastening

Brandner Design provides a very effective adhesive for gluing steel panels or tile to wood, plaster or concrete substrate.

16 guage steel is recommended when using glues to adhere small steel panels.

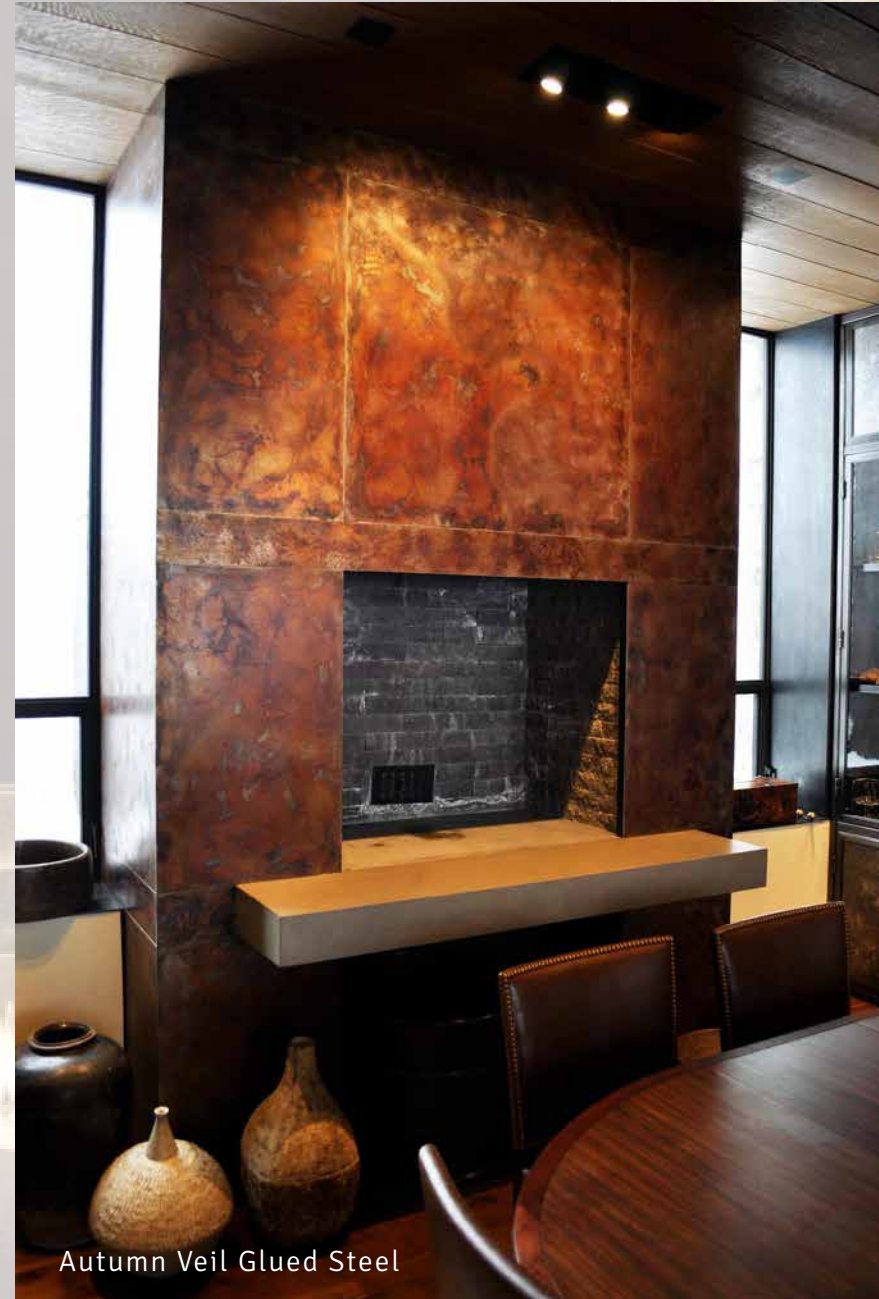
*The most important step when using adhesives is preparing the substrate, make sure the substrate is as flat and true as possible to ensure the best result.



Antique Brown Black
Glued Mosaic Panels



Zinc Glued Panel Doors



Autumn Veil Glued Steel

Panel Systems

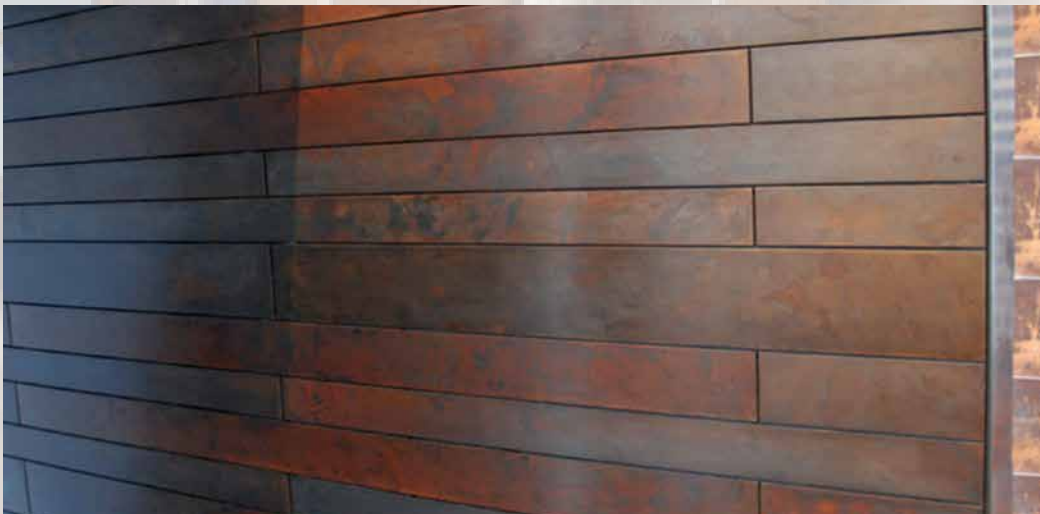
Steel sheets can be cut to shapes or panels up to 5'x10' at True Cut Laser, our partner company. Our CNC Fiber laser cuts with high precision from CAD-based drawings from dimensions provided by our clients.

Available Thicknesses:

- 18 gauge
- 16 gauge or 1/16" thick
- 14 gauge
- 12 gauge
- 10 gauge or 1/8" thick
- 3/16" thick
- 1/4" thick
- 3/8" thick

Floating Panel

If the design requires a "Floating Panel" they are typically pre-fastened to a substrate, such as 1/2" plywood. When the panels are hung, a space is set between them giving the effect that they are floating.



Tight Panel

Panels can also be set tight together, creating a tile texture, using any of the three fastening methods mentioned.

True Cut Laser - Steel Processing Studio

Our Trumpf 3000 watt, 5'x10', high-speed fiber laser provides the most efficient and precise laser cutting in the world. This fiber laser is extremely versatile from slicing the thinnest material up to 3/4" thick steel or laser cutting steel, aluminum, bronze, copper, and brass. We offer etching services on various metals and alloys, including mirror finish #8 Stainless Steel.

Our Trumpf TruBend CNC Press Brake ensures consistent high-quality formed parts with a bending length of 10'. From a simple 90° bend to a complex multi-angle and multi-bend design, True Cut Laser has you covered!



TRUE CUT LASER



Design

Our staff of drafts people and designers will help with layout, choice of material, finish and engineering of installation.

We will meet the needs of whatever our clients want to create and offer advice if there are unknowns.

Shipping & Installation

We ship nationally and internationally. We can install a project anywhere, but we also provide consultation with installers to ensure a successful end result.

Patina Protective Sealers

All patinated products come pre-sealed with one of the following to protect the finish and deter rusting*:

- Hand Rubbed Oil & Wax
- Acrylic
- Clear Powder Coating/Paint

Hand Rubbed Oil & Wax

- Oil & Wax allows weathering and rust to occur over time.
- Recommended for dryer climates and residential interior use.
- Occasional maintenance and cleaning may be required to retain a vibrant finish.

Acrylic*

- Recommended for interior areas with high use, moisture, and commercial applications.

Clear Powder Coat | Paint*

- Recommended for counter and bar tops.
- Provides extra durability for exterior settings.
- Clear powder coat is only available on Hot Rolled Steel.



Warranty Overview

Warranty on Patina Finishes:

All patina finishes and sealers on all metals have a one (1) year conditional warranty against delamination, rusting and discoloration. Patina finishes are living finishes and must be cared according to the Patina Care Sheet in order for any failure to be considered a warranty item.

Warranty on Panel Lamination to Plywood Substrate or Door:

All laminated panels applied to a Brandner Design substrate have a one (1) year conditional warranty against delamination, separation, and warping. All panels must be installed as per Brandner Design specs and cared for per the Care Sheet in order for any failure to be considered a warranty item.

*Brandner Design does not provide a warranty against rust for exterior steel finishes.

Contact

Contact Brandner Design for a consultation with one of our finish experts to discuss your project and which materials, patina, and sealer will work best for your application. We are more than happy to provide guidance and answer questions.