

METAL PANEL RAIN SCREEN SYSTEMS
by Brandner Design

METAL PANEL RAINSCREEN SYSTEMS BY BRANDNER DESIGN



Brandner Design's Rainscreen System is decorative metal cladding specifically designed to perform in the changing elements. A true blend of form and function for your commercial or residential project.

Brandner Design's Metal Panel Rainscreen System demonstrates how correct material choices, components and hardware can work together to create a functional, decorative and durable metal clad system. This cladding system provides laser cut and formed metal panels with a beautiful, hand-applied patina finish ready to install with all necessary hardware and components. Take the guesswork out of your metal cladding project with a proven system from Brandner Design.

Panel Size, Layout & Fastening

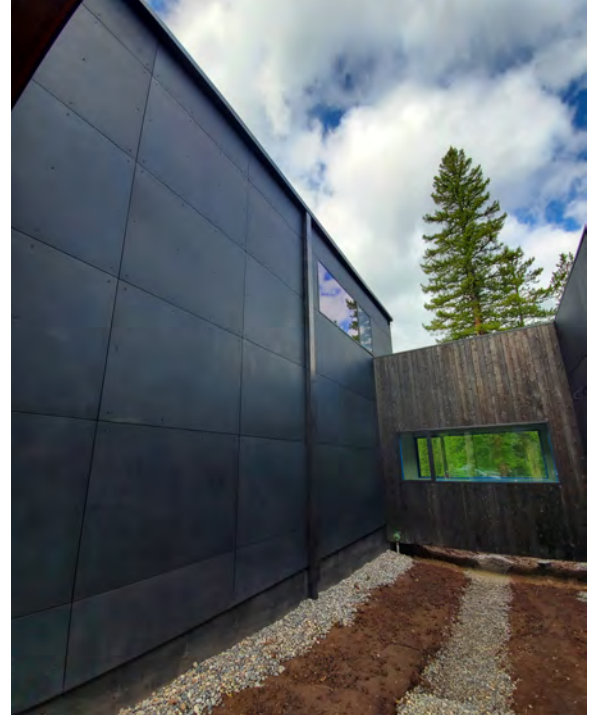
- Recommended Panel Size of 20-25 sq ft
- Recommend panel thickness is 12 ga for face screwed applications.



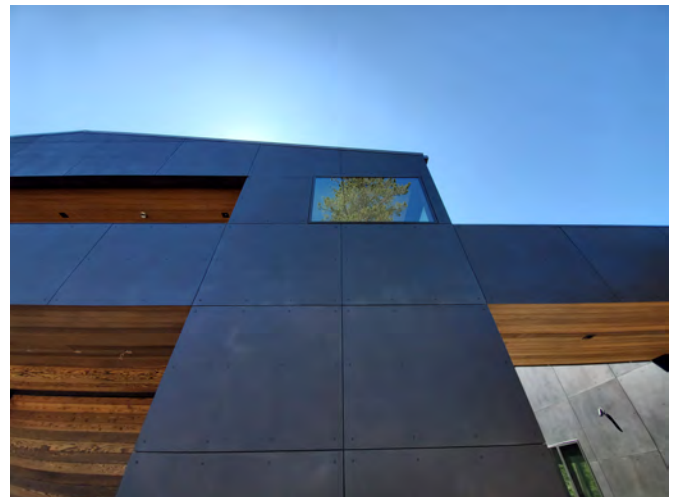
- Recommend 1/4" reveal on all sides of panels to allow room for expansion and contraction of panels
- Screws are a Fastcap flat head style Torx screw with a 5/8" diameter head and a neoprene washer.



1-5/8" Headlock HD Wood Screw with
1/2" OD Neoprene Fender Washer



- Panels can be laser cut to any shape.
- Panels come with a 3/8" diameter screw hole. Screws are 3/16" diameter which allows room for panel to move.



- Brandner Design Laser Scanning Services creates a 3D point cloud to provide as-built dimensions so the panel layout can be laser cut with precision for any shape wall or application. Contact Brandner Design for more information about our laser scanning services.

Corners & Transitions

- A variety of trim details can be used for corner transitions of different & like materials. These trim details can be used for interior & exterior applications.



Figure 1.1 WD/WD
Outside Corner



Figure 1.2 WD/STL
Outside Corner



Figure 1.3 STL/STL Outside
Corner



Figure 3.1 WD/WD
Inside Corner



Figure 3.2 STL/WD
Inside Corner

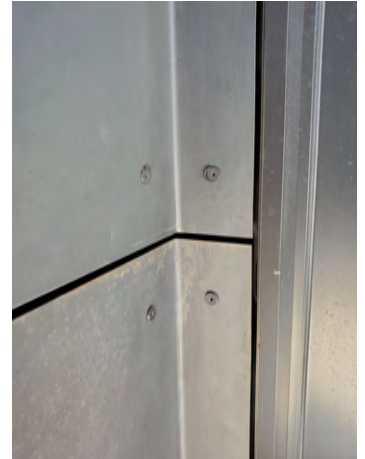


Figure 3.3 STL/STL
Inside Corner



Figure 4.1 WD/STL Siding
on Wall with drip edge
flashing

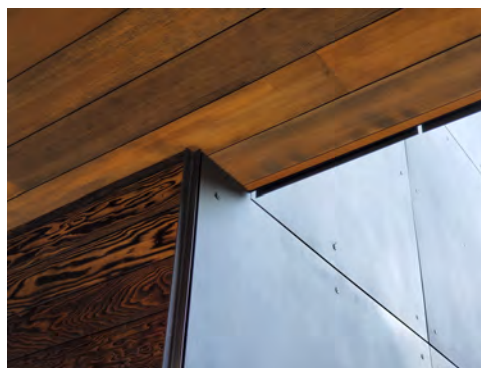


Figure 4.2 STL/WD Soffit
with Drip Edge

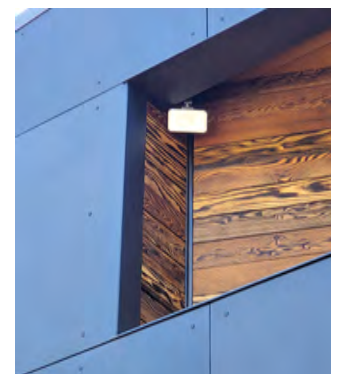


Figure 4.3 STL/WD
Siding at Buck
Opening

*WD=Wood, STL=Steel

Corner & Transition Details

- These transition details can be used for both interior and exterior applications.
- Outside Corner detail drawings shown below. Images of corner details in use shown on page 4

Figure 1

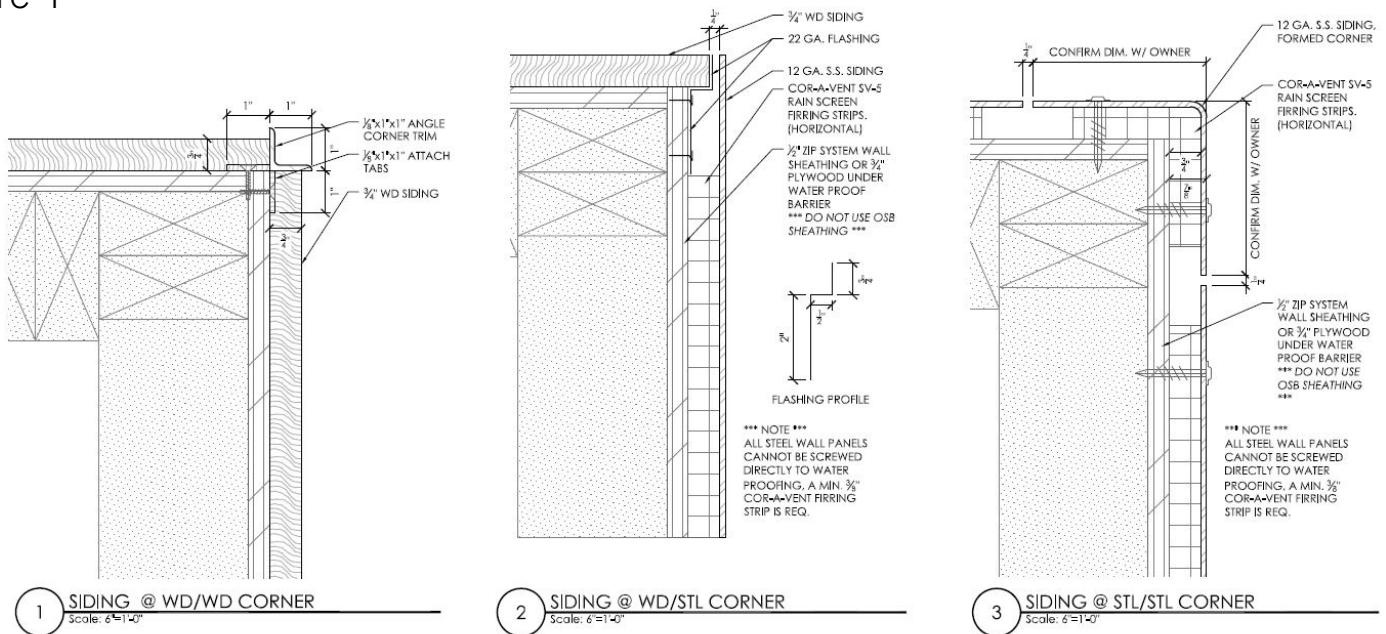
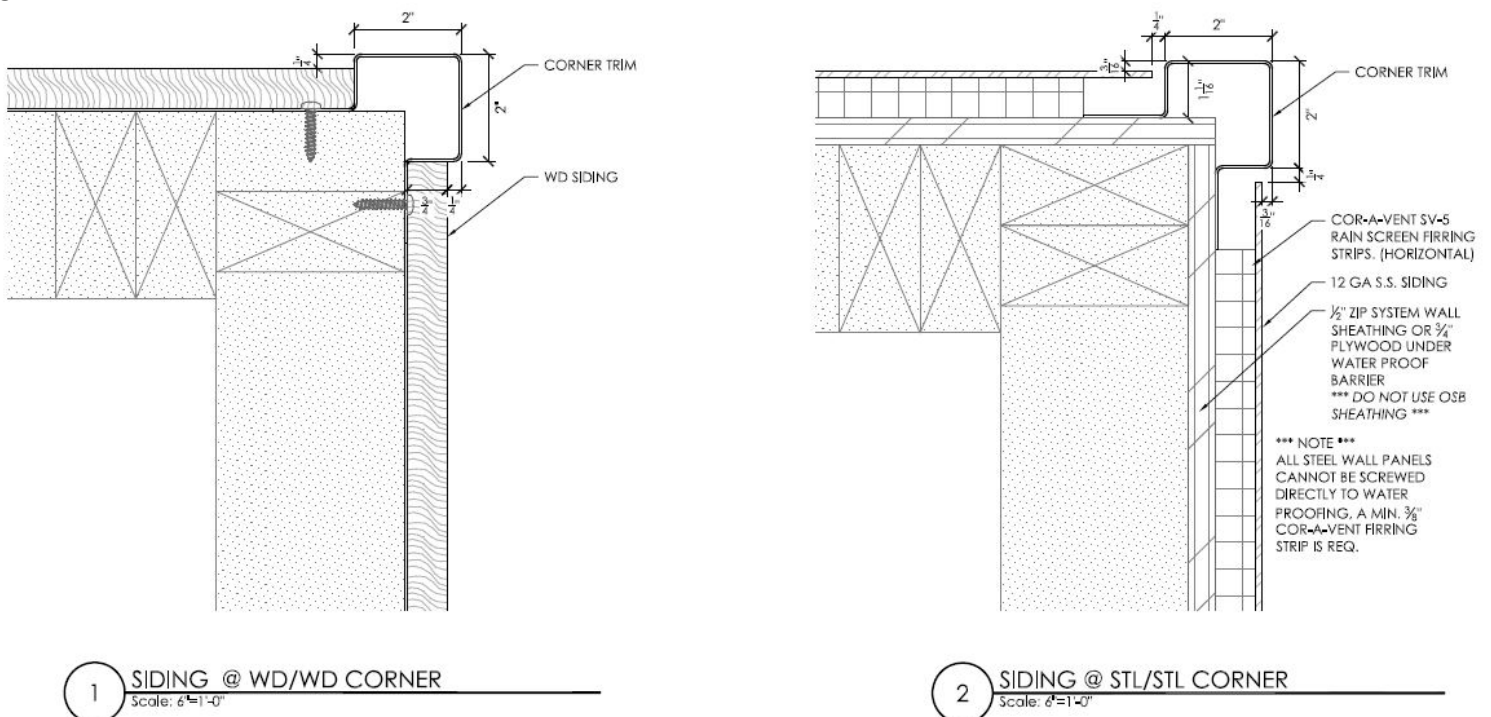


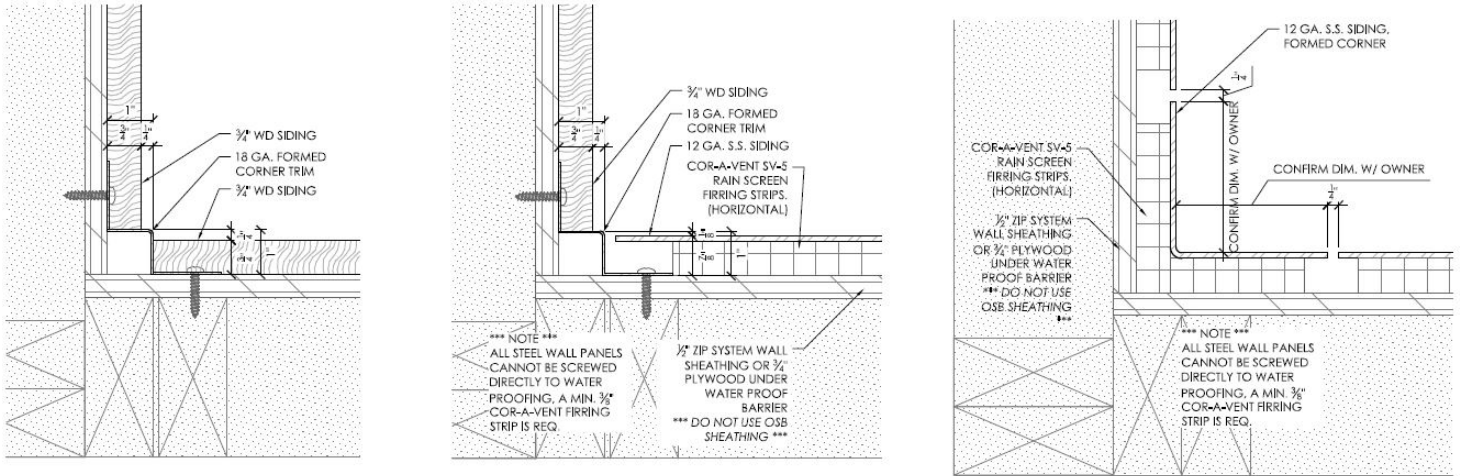
Figure 2



Corners & Transitions

- Inside Corner detail drawings shown below. Images of corner details in use shown on page 6

Figure 3



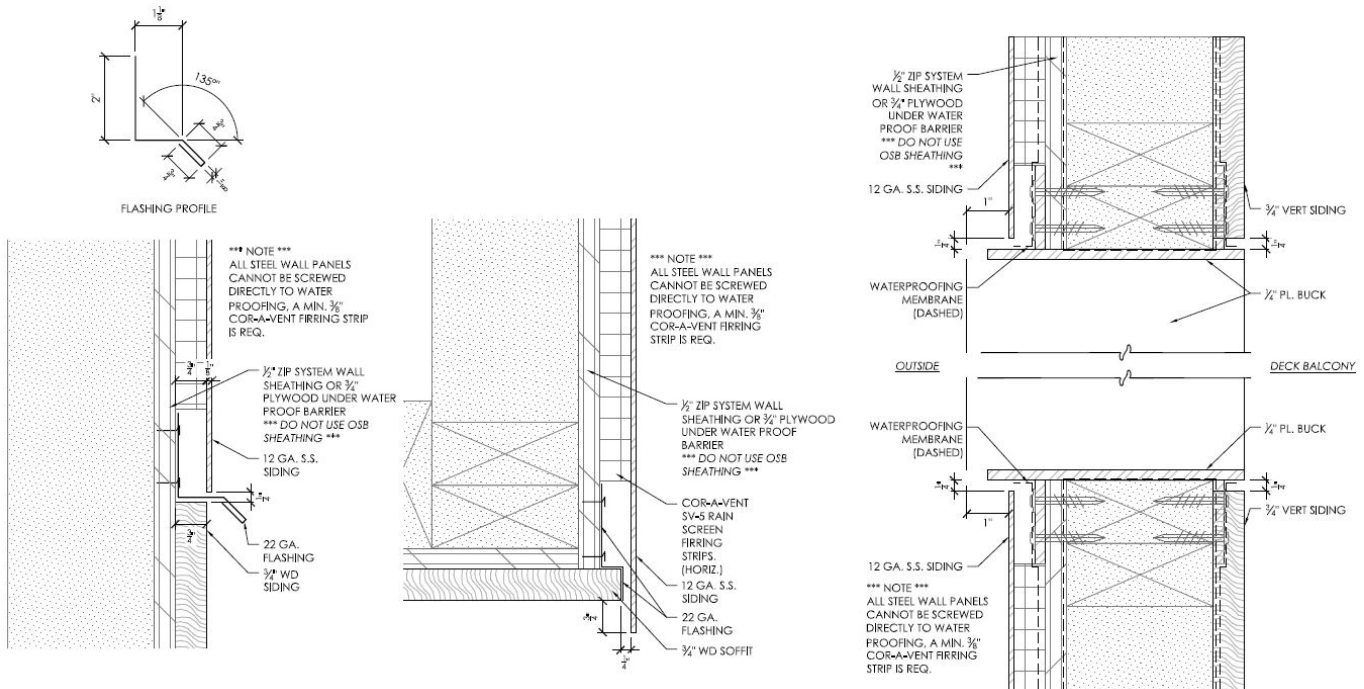
1 SIDING @ WD/WD CORNER (INSIDE)
Scale: 6"=1'-0"

2 SIDING @ WD/STL CORNER (INSIDE)
Scale: 6"=1'-0"

3 SIDING @ STL/STL CORNER (INSIDE)
Scale: 6"=1'-0"

- Other Transition detail drawings shown below. Images of transition details in use shown on page 6

Figure 4



1 VERT SECT @ WD/STEEL SIDING
Scale: 6"=1'-0"

2 SECT @ STL/WD SOFFIT
Scale: 6"=1'-0"

3 STL/WD SIDING @ BUCK OPENING
Scale: 6"=1'-0"

Behind The Scenes

- With any Rain Screen the sheathing of the building must be weather proofed by using a waterproofing membrane or similar rain screen fabric.
- Cor-A-Vent Furring Strips are used to create a gap between the panel and the building sheathing.
- Cor-A-Vent strips are 3/8" thick and can be doubled up to create a 3/4" gap that can be necessary for matching adjacent wood siding or window trim.
- It is necessary to try to line up furring strips with the screw holes when doing layout of panels.
- Refer to detailed drawings (pg 5&6) for sheathing build-out.



Grace Waterproof membrane shown before furring strips and panels installed.



Cor-A-Vent Furring Strips installed and ready for panels.



Furring Strips placed to line up with screw holes of metal panels for mounting.

Signature Patina Finishes

- Brandner Design has many signature patina finishes available on both Stainless Steel and Mild Steel.
- Stainless Steel finishes are the most durable and will resist rusting.
- Hot rolled Steel will eventually rust in most moist climates unless sealed with an acrylic urethane or clear powder coat.
- All of our Patina finishes are “living” finishes and will vary in tone and depth over time depending on the exposure and climate.
- Colored powder coat panels are also available on both steel and aluminum.
- Please consult with our team of finish experts on what is the best finish for your project.



Scan QR Code to go to Brandner Design's Signature Patina Finishes.



Sandblasted Black Stainless Steel panels with oil & wax will not rust and maintains the original finish longer.



Blackened Hot Rolled Steel panels with oil & wax showing weathered appearance after a number of years. Cold & Hot Rolled Steel would require a sealer to resist rusting.



The front of True Cut Laser shown with Blackened Hot Rolled panels laser cut to various shapes and sizes. 1/4" reveal between all panels.